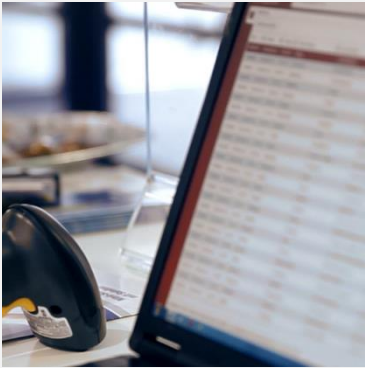


# SCAN2LEAD STATION - ALL CONTACTS AT A GLANCE



- + perfect for fixed work stations, e.g. at the booth counter
- + scanning of barcodes with a tethered scanner plugged into a laptop
  - scanned visitor data is immediately shown on the display and can be edited and amended individually
  - convenient capture of notes with the keyboard
  - lead qualification by using a digital lead form: selection of pre-defined interest tags, follow-up activities etc.
- + internet connection is required
- + data is transmitted in real time and immediately available online in the Scan2Lead PORTAL for export and further post-processing
- + access to the Scan2Lead PORTAL with all its features (automatic backup of captured data, data export, management of devices, graphical reports about your visitors etc.)
- + includes one Scan2Lead licence for a laptop as well as a tethered scanner
- + all laptops are supported (web application)
- + available in combination with a rental laptop as well (for a fee)

## Contact & Consulting

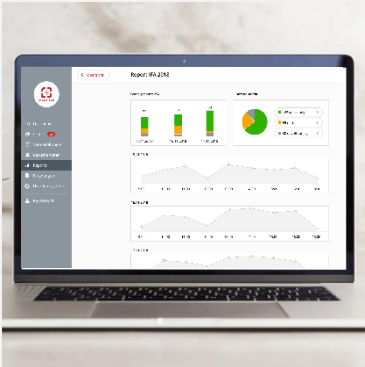
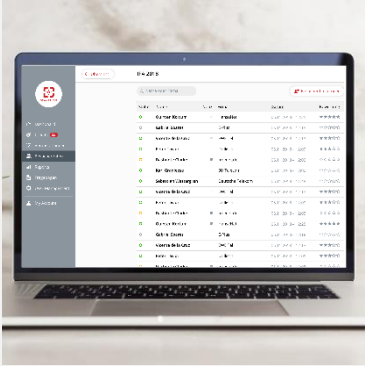
+49 89 4444 33 111

[contact@scan2lead.com](mailto:contact@scan2lead.com)

[www.scan2lead.com](http://www.scan2lead.com)



# SCAN2LEAD PORTAL - ALL CONTACTS WITH ONE CLICK



- + web-based online portal with customised login
- + key administration tool that is included in all solutions and cannot be booked separately
  - all visitor data is collected and stored centralised and in real time
  - data can easily be downloaded through an Excel file
  - configuration of an individual lead form
  - graphical reports about your visitors
  - management of all Scan2Lead devices, assignment to employees
  - access to test tickets and the Scan2Lead Help Center
- + to connect your own systems an interface is available upon request (for a fee)
- + access to the Scan2Lead PORTAL is possible at any time (web application)

## Contact & Consulting

+49 89 4444 33 111

[contact@scan2lead.com](mailto:contact@scan2lead.com)

[www.scan2lead.com](http://www.scan2lead.com)